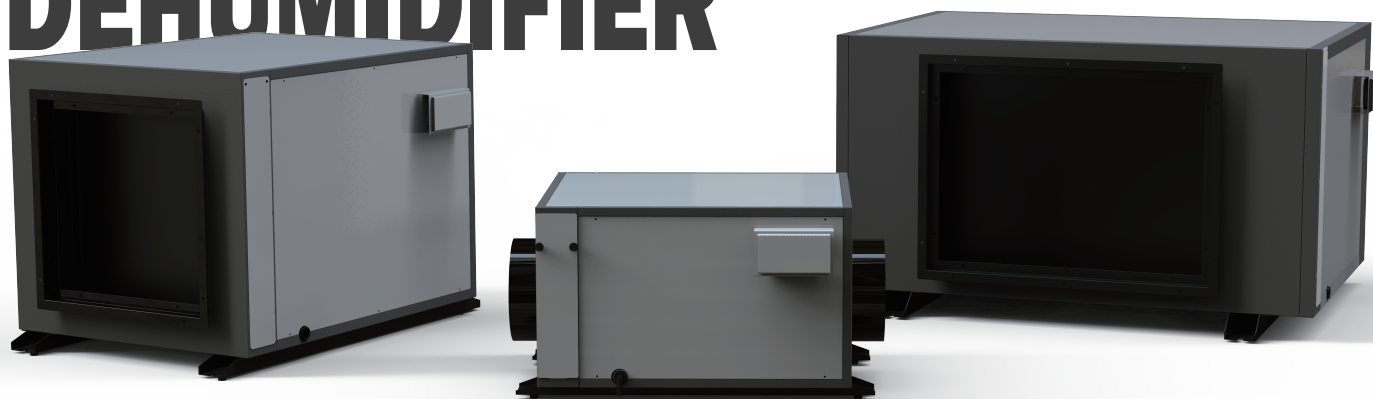


OWNER'S MANUAL

**READ THIS MANUAL CAREFULLY
BEFORE OPERATING**

CEILING DEHUMIDIFIER



ZETA 145
ZETA 240
ZETA 480

IMPORTANT : After unpacking (or accidental tip-over) allow dehumidifier to stand upright for 20 minutes before starting



Important Instructions

Before installing and using your dehumidifier, please read this owner's manual carefully. Store this manual in a safe place for future reference.

The use of electrical products may create hazards that include, but are not limited to injury, fire, electric shock. Failure to follow these instructions may damage and/or impair its operation and void the warranty.

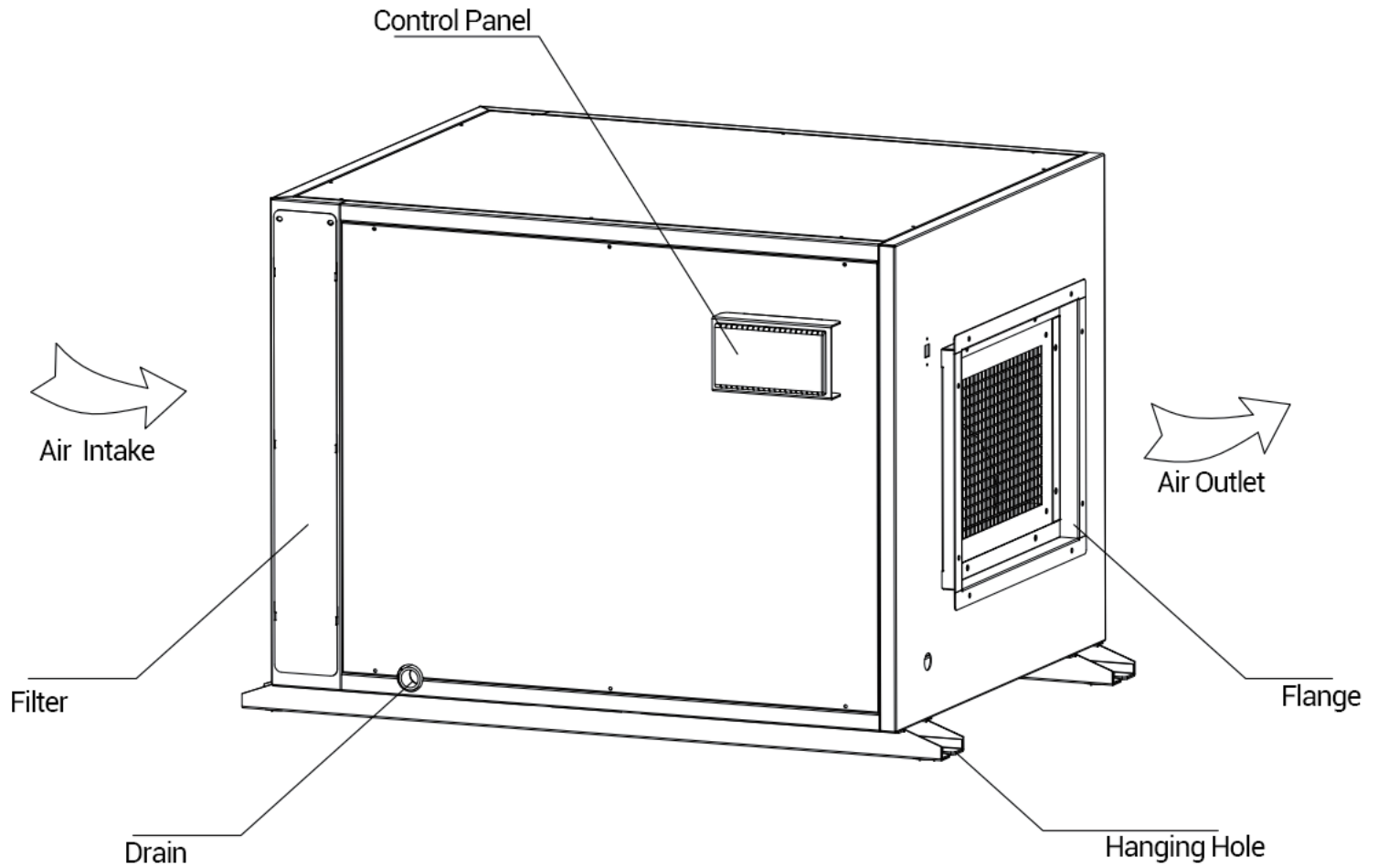
Safety Tips

- Before operating, remove all packaging material and check for any damage that may have occurred during shipping or any missing items.
- Check household power supply to ensure it matches the specification of appliance.
- Always place the unit on a level surface.
- NEVER use or store gasoline or other flammable vapor or liquid near this unit unless instructed by this manual.
- **DO NOT** lay power cord under carpeting. **DO NOT** cover cord with throw rugs, runners, or similar coverings. **DO NOT** route cord under furniture or appliances. Arrange cord away from traffic area and where it will not be tripped over.
- To reduce the risk of fire or electric shock, **DO NOT** use this appliance with any solid-state speed control devices.
- **DO NOT** touch this appliance or the plug with wet hands or while standing in water.
- Maintain a 300-460mm clearance space around this unit. **DO NOT** block or cover air inlet or outlet grilles.
- The unit must be connected to a correctly grounded power supply.
- **DO NOT** start or stop the unit by inserting or pulling out the power plug.
- **DO NOT** use an adapter plug or extension cord.
- **DO NOT** use the unit in the immediate surroundings of a bath, a shower or a swimming pool.
- **DO NOT** insert anything into the air outlet. **DO NOT** obstruct air inlet or outlet grilles unless instructed by this manual.
- **DO NOT** direct the air flow at human faces or bodies.
- **DO NOT** let children play near this unit.
- Always inspect the cord for signs of damage before use. If the power cord is damaged, it must be replaced by the manufacturer or a qualified service technician.
- **DO NOT** attempt to repair or adjust any electrical or mechanical functions of this appliance, as this may cause danger and void the warranty.
- If the appliance is damaged or it malfunctions, **DO NOT** continue to use it. Unplug the product and refer to troubleshooting guide or contact the seller.
- Make sure the unit is turned off and unplugged before cleaning or servicing this unit.

Notice of Operation

- There have **3 minutes** protection wait when the dehumidifier re-start after compressor stopped working.
- The operated temperature is 0-45°C.
- We suggest wash/change the filter once every 3 months. • Clean up the drain hose after operation to avoid hose stuck.
- Install the included drain pipe to the draining nozzle on the machine and direct the hose to the desired area before operating the machine. **Do not** block the drain hose. The end of the drain hose should not be higher than 16-feet above the outlet hole. If the drain hose end is too high, water will not drain properly and could damage the unit.

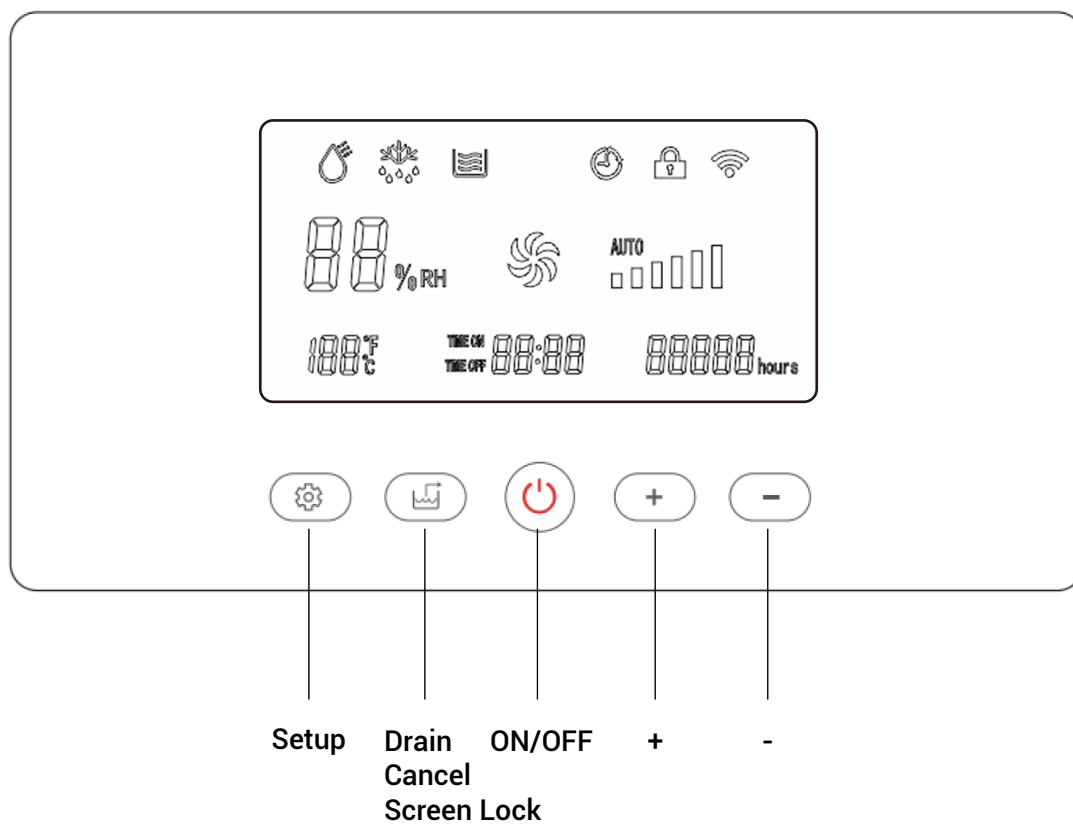
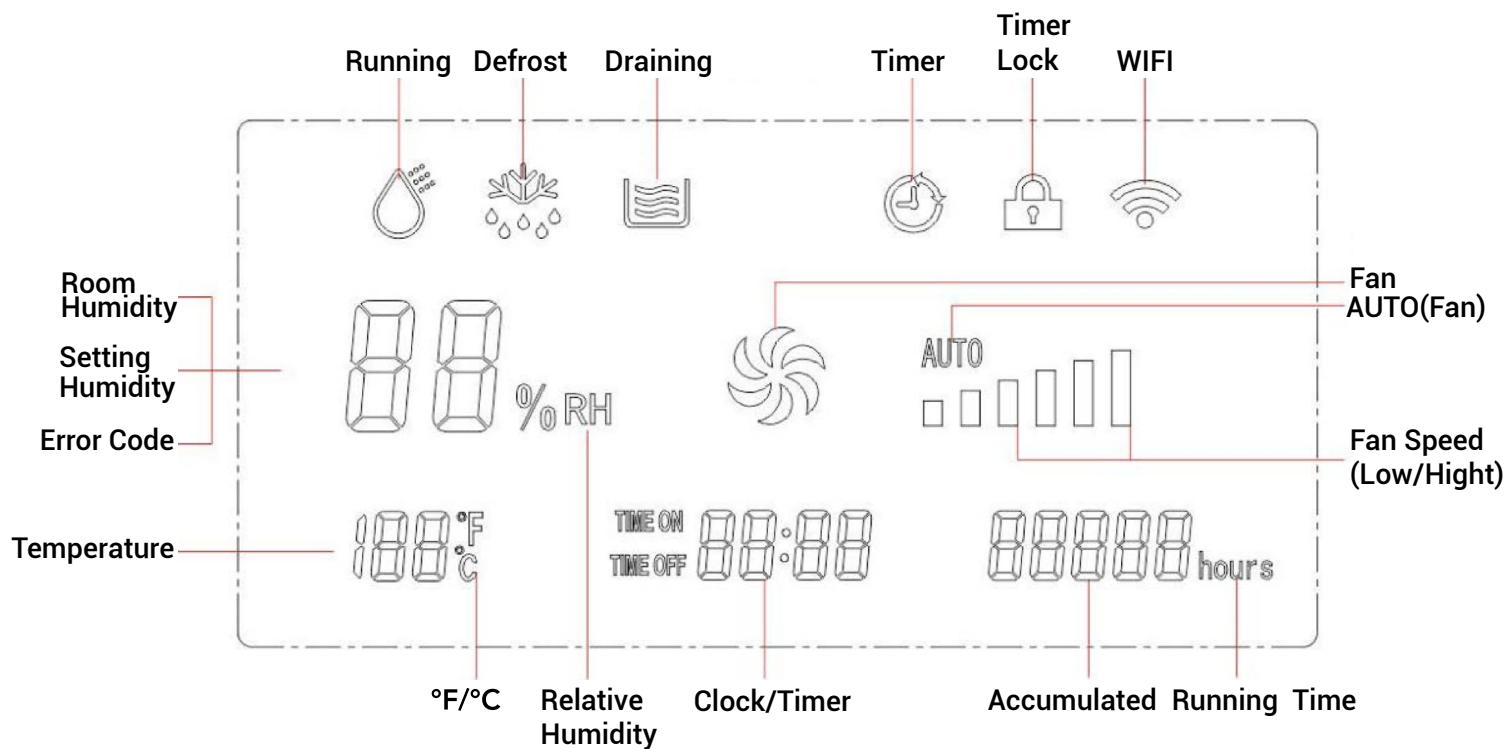
Product Description







Note: There is an air inlet at the rear of the machine, please ensure that the distance between the machine and the wall is greater than 20cm

Control Panel

1. Indicators



2. Buttons

-  Each time the on/off key is pressed, the controller performs a cyclic switching of "on-off-on". (The power is turned on for the first time, and the power on/off will only work after each test is completed).
-  Plus and minus keys: used to set humidity value, timing on/off time, clock, temperature scale.
-  Setting key: used to set system functions. Each short press enters the following settings in sequence: Fan Speed -> SetTime -> Clock -> Temperature Scale -> Shutdown Drain -> Drain Time -> Modbus Device Address Setting.
-  Drain/lock screen key: Short press to start the water pump to drain (the water pump needs to be purchased separately). Long press to enter the lock screen state. Short press during time setting to cancel the time setting. Press and hold for 3 seconds during the filter replacement reminder to clear the reminder.

3. Operation Instructions

(1) Dehumidification value setting

Press the plus and minus keys to set the dehumidification value, the range is 30%~90%, short press to adjust 1%, long press to adjust 5%, when the set value is lower than 30%, it will display "CO" and enter the continuous dehumidification mode.

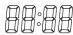
(2) Timing boot settings

Click the "Setting button", when "TIME ON" flashes slowly on the screen, it enters the timing power-on setting. The time position flashes, short press the plus and minus keys to adjust for 1 hour, long press to adjust for 5 hours, and the value 00-23 changes cyclically. Press the "setting key" again to enter the minute setting, the minute digit flashes, short press the plus and minus keys to adjust for 1 minute, long press Adjust for 5 minutes, the value 00-59 cycle changes. After 3 seconds of no operation, save and exit the setting, short press the drain button to cancel the timing setting, and the time becomes 00:00. Note: After the timing on/off is set, it will be automatically canceled once, and will not be executed cyclically. (After execution, the timing on or off time becomes 00:00)


(3) Timer shutdown setting

Click the "Setting button", when "TIME OFF" flashes slowly on the screen, enter the timed shutdown setting. Other steps are the same as the timed power-on setting method.

(4) Clock setting

The timer switch time is based on the clock time (not countdown), so you need to correct the machine clock when you use it for the first time. Click the "setting button", when "  " flashes slowly on the screen, enter the clock setting. Set the clock time to the exact time.

(5) Temperature scale setting



Click the "Setting button", when the temperature scale  is flashing, press the plus and minus keys to switch the temperature scale between °C and °F cyclically. Press the setting key again to exit the setting state. The system default temperature scale is Celsius.

(6) Timing function

The timer starts when the dehumidifier is turned on, and stops when the dehumidifier is turned off. The time of power off and restart is not reset. The unit of time is hours. The number of timing digits is 5, and the maximum timing is 99999 hours (return to zero).

Control Panel

(7) Lock screen function

Press and hold the drain button  to enter the lock screen state, the lock screen icon  flashes, and nothing can be done in the lock screen state. Long press the lock screen key or mobile APP to unlock.

(8) Filter replacement reminder function

After the dehumidifier has been running for 3 months, " **CLEAN** " will flash slowly on the screen, and the buzzer will sound three times, indicating that the user replaces the cleaning filter. Press and hold the drain button to dismiss the reminder to return.

(9) MODBUS device address setting

Enter the device address setting, the humidity display area flashes "Ad", and the temperature display area flashes first. Display the high bit of the device address, at this time, short press the increase key or the decrease key to adjust the high bit value cyclically between 0-F; no operation for 3 seconds or press the setting key again to enter the low bit setting, short press the increase key or the decrease key to adjust the high bit value. Adjust the low digit value cyclically between 0-F; exit without operation for 3 seconds and save the setting. The default device address is 01, and the address setting range is 01-F7.

4. APP Control



(1) Scan the QR code (below) on your mobile phone to download the "Smart Life" APP.

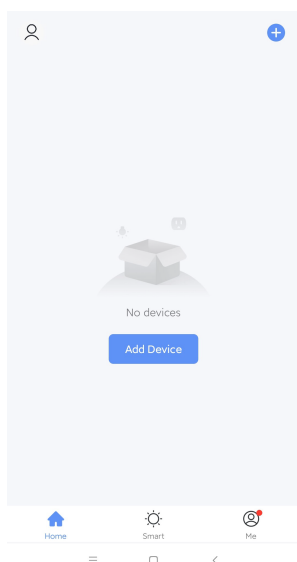
(2) Press and hold the setting button on the machine control panel  for 3 seconds to reset the WIFI module.

(3) Turn on the Bluetooth of your mobile phone and open the "Smart Life" APP.

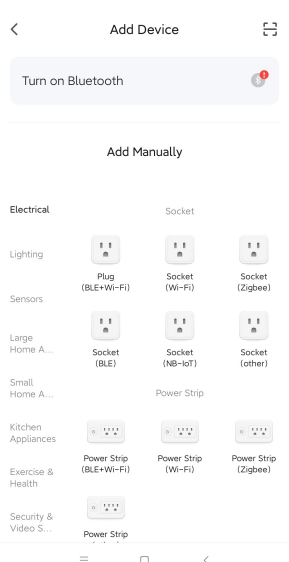
(4) Click "Add Device" in the APP (Figure 1).

(5) The phone will automatically search for nearby devices, and after discovering the device, click "Add" (Figure 2).

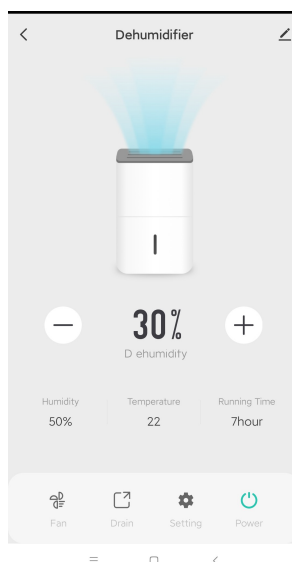
(6) Enter the WIFI density and display "Added successfully", you can use the mobile phone to control the device (Figure 3).



(Figure 1)



(Figure 2)



(Figure 3)



·APP download·

Precautions

5. Matters Needing Attention

1. After the compressor is turned off and then turned on, there is a 3-minute delay start protection.
2. The operating temperature of this machine is 5°C~38°C.
3. Do not tilt the machine more than 45° when moving.
4. It is recommended to clean the filter once every three months. When cleaning, put the filter into warm water and gently wash it, and let it dry. Can be loaded after drying. Do not use the device without a filter installed.
5. The air inlet and air outlet must be more than 20cm away from the wall, so as not to affect the effect.
6. Please unplug the power plug if the machine is not used for a long time.

6. Troubleshootings

Fault Phenomenon	Cause Analysis	Method Of Exclusion
Dehumidifier not working	<ol style="list-style-type: none">1. The power supply is out of power2. The power plug is not inserted into the socket	<ol style="list-style-type: none">1. Restore power2. Insert the plug into the socket
Poor Dehumidification	<ol style="list-style-type: none">1. The filter is dirty2. There are obstacles in the air inlet and outlet3. The room is not sealed4. The temperature in the room is low	<ol style="list-style-type: none">1. Clean the filter2. Remove obstacles3. Close doors and windows4. In a lower temperature environment, Dehumidification will drop significantly
Abnormal Noise	<ol style="list-style-type: none">1. The machine is not placed smoothly2. Whether the air outlet is blocked	<ol style="list-style-type: none">1. Reposition the machine smoothly2. Remove the air outlet obstruction

Note:

1. When the above faults cannot be eliminated and it is confirmed that repair is required, please contact the supplier or agent, and please do not disassemble the machine to repair by yourself.
2. It is normal for the machine to make a "si" "si" sound when the dehumidifier is running or stopped.
3. It is normal for the hot air to be discharged from the air outlet of the dehumidifier

Error Code

Error Code	Fault Description	Solution
E0	Communication Fail	Replug the communication cable or replace
E1	Humidity sensor failure	Replug the temperature and humidity sensor or replace
E2	Room temperature sensor failure	Replug the temperature and humidity sensor or replace
E3	Water full alarm/Fault	Check for clogged drains or replace water pump
E4	Coil temperature sensor failure	Reconnect coil sensor or replace

This series of products have the function of automatic fault judgment. If there is a fault, the corresponding fault will be displayed on the display screen.

Precautions for safe use and maintenance



When the power cord is damaged, be sure to have it repaired by the manufacturer, service agent or qualified professionals, and users must not repair it by themselves.



If any abnormal phenomenon is found, please turn off the power switch of the machine and unplug the power plug. (Abnormal operation may cause electric shock, fire or other similar accidents)



To turn off the machine, please turn off the power switch of the machine first, and never pull out the power plug directly.



To avoid accidental electric shock, keep your hands dry when plugging or unplugging.



Wipe the conductor part of the plug clean, and then insert it firmly into the socket.



To avoid fire or explosion accident, do not spray the machine with water. Also, do not place flammable or chemical substances near the machine.



To avoid melting or ignition of the casing material of the unit, do not place the unit near heating equipment.



Please do not use the machine outdoors, direct sunlight or rain may cause overheating, electric shock or fire.



When running the machine for a long time, please check it regularly, paying special attention to the filter and other similar parts.



When cleaning and maintenance, please turn off the power of this machine and unplug it.



In order to avoid electric shock accident, please do not let water spray or wet the machine when cleaning.

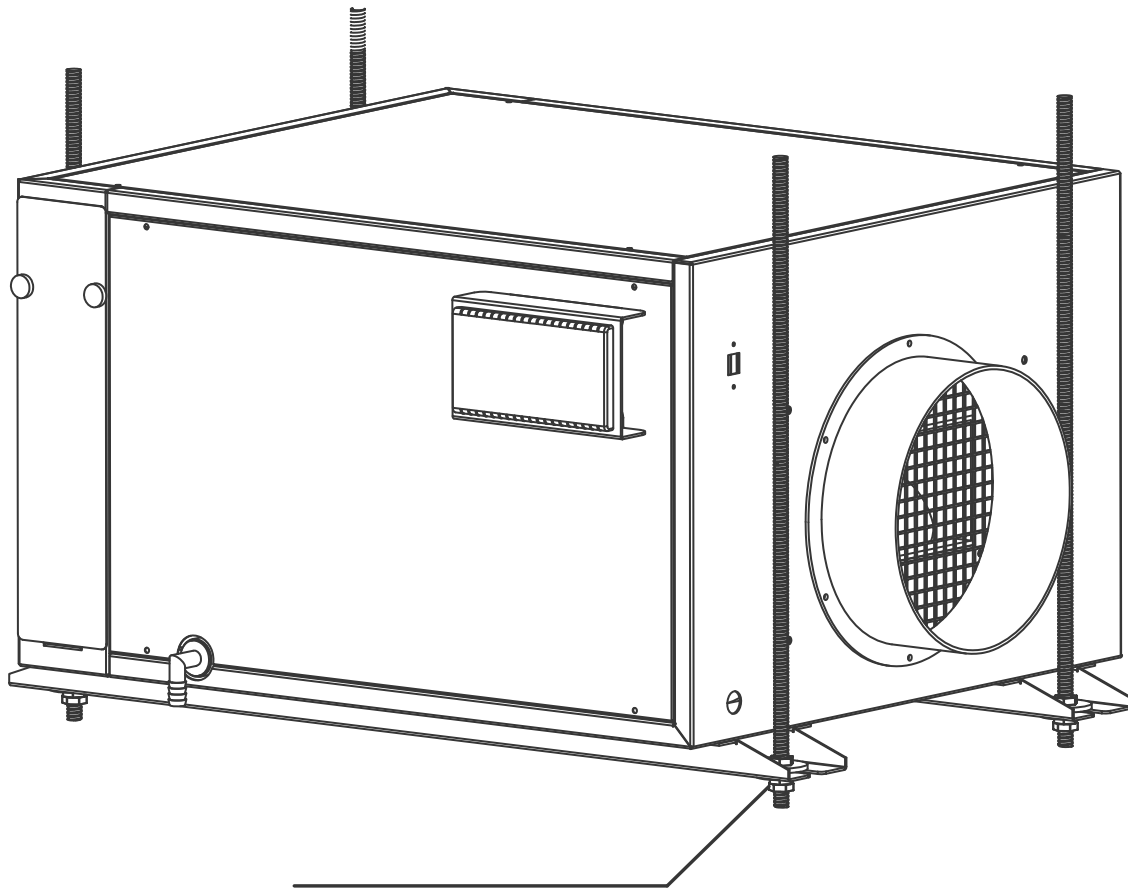


Please do not disassemble or repair this unit by yourself.



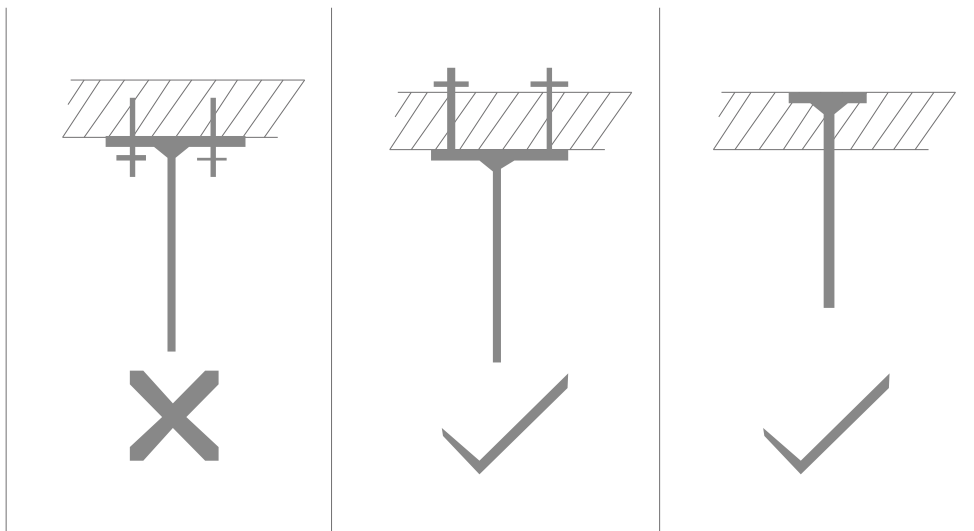
When not in use for a long time, please turn off the unit and remove the power cord.

Ceiling Installation Instructions



M12 Boom Bolts M12 Nut, Washer, Spring Washer

Ceiling installation requirements:

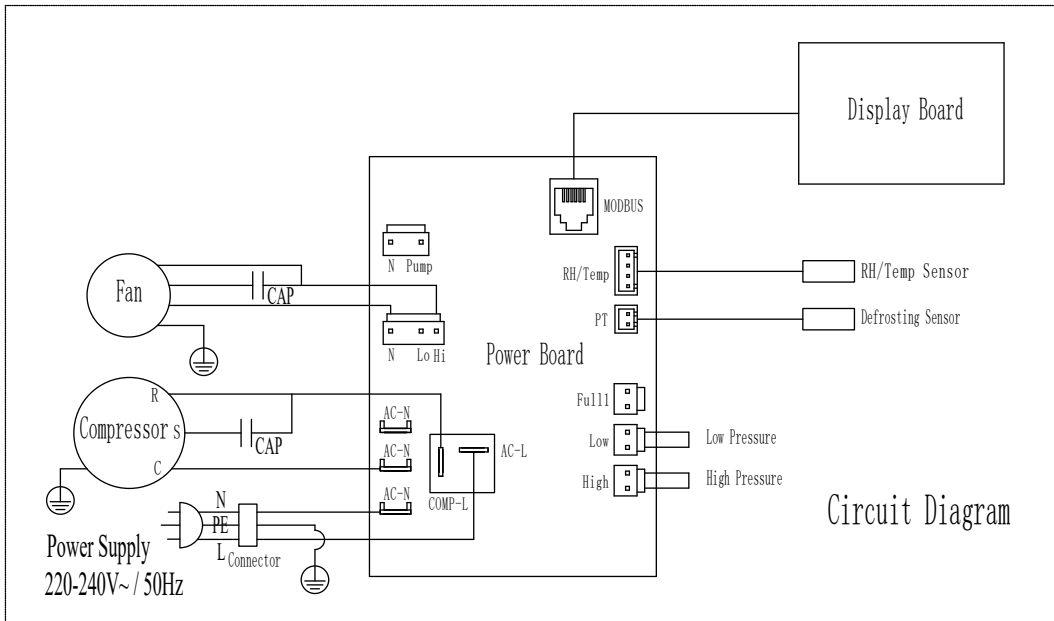


1. Requirements for the production of ceiling brackets:
The hanger should not only have enough bearing capacity, but also have enough seismic strength.
2. Horizontal adjustment of ceiling dehumidifiers:
The installation of the dehumidifier requires leveling.
3. Horizontal adjustment of ceiling dehumidifier:
In order to ensure smooth drainage, the slope of each meter long drainage pipe should be 3cm, and the drainage pipe should not be bent.

Product Parameter Table

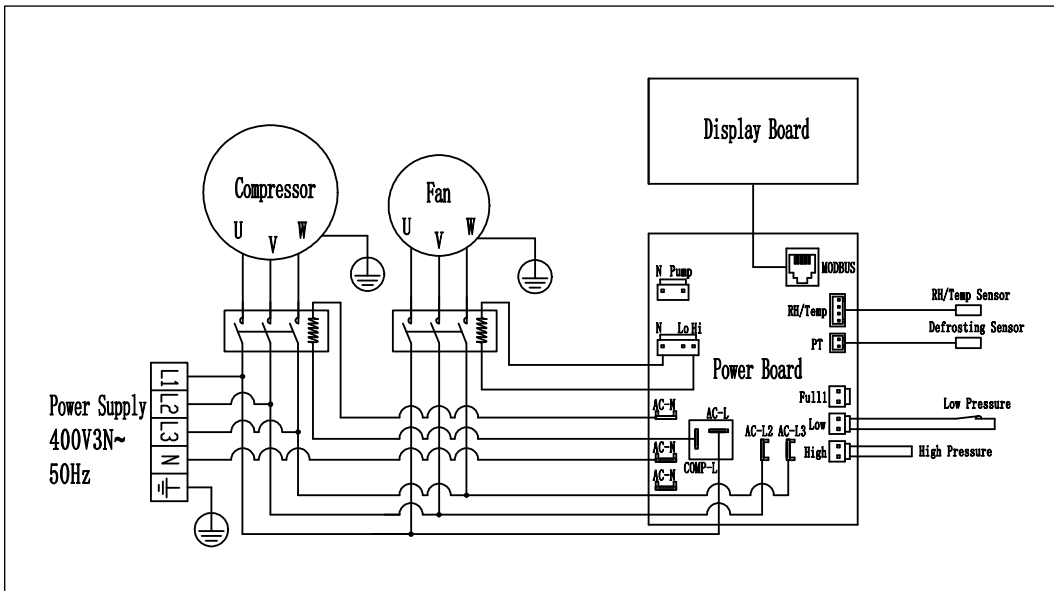
Model	Zeta145	Zeta240	Zeta480
Power Supply	220V-240V /50Hz	400V/50Hz	400V/50Hz
Rated Input Current	7A	5.5A	9.37A
Rated Input Power	1530W	2900W	4720W
The Air Volume	650m ³ /h	1600m ³ /h	2600m ³ /h
Dehumidification Capacity (30°C / 80% RH)	145L/D	240L/D	480L/D
Dehumidification Capacity (27°C / 60% RH)	85L/D	146L/D	288L/D
Filter	Nylon	Nylon	Nylon
Inlet Size (mm)	Ø242	333*410	385*420
Outlet Size (mm)	Ø242	497*497	547*747
Net Weight	62.5Kg	119.5Kg	201Kg
Unit Size (mm)	872*598*436	1040*780*858	1271*1040*835
Refrigerant/Charge (kg)	R410A/1.3kg	R410A/3.2kg	R410A/6.0kg

Circuit Diagram

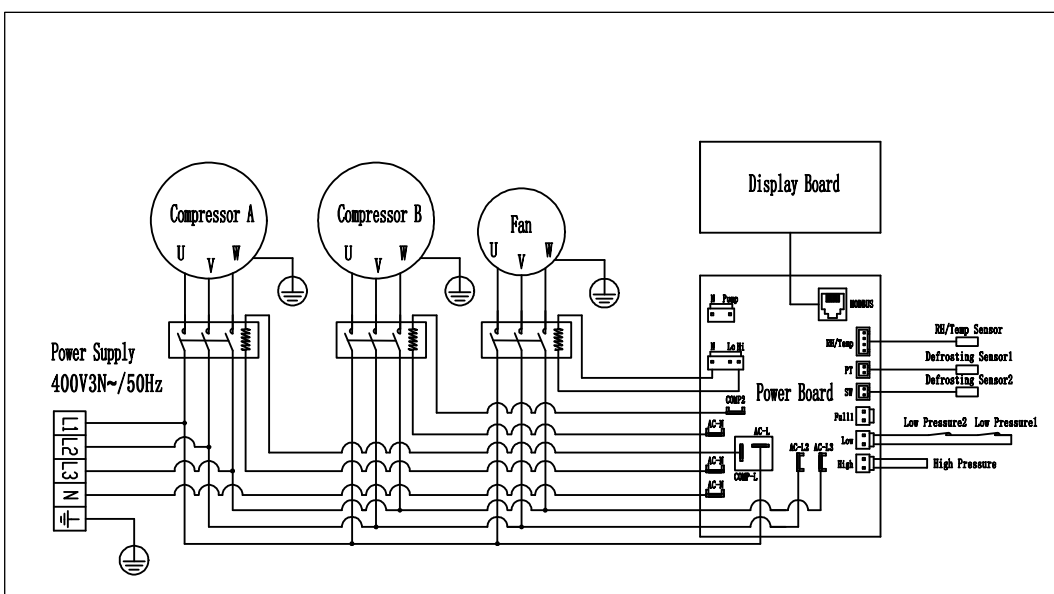


Zeta145

Circuit Diagram

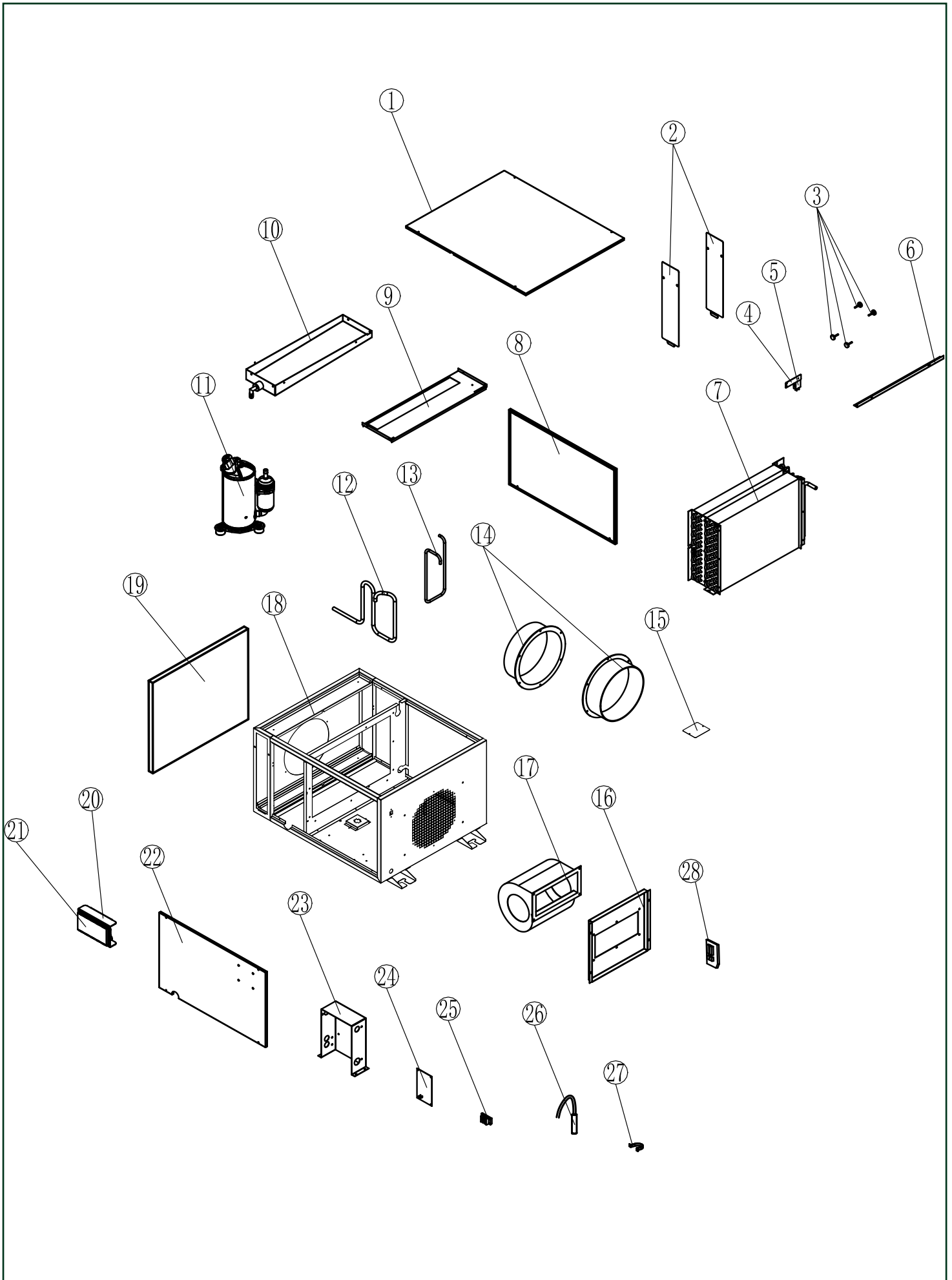


Zeta240

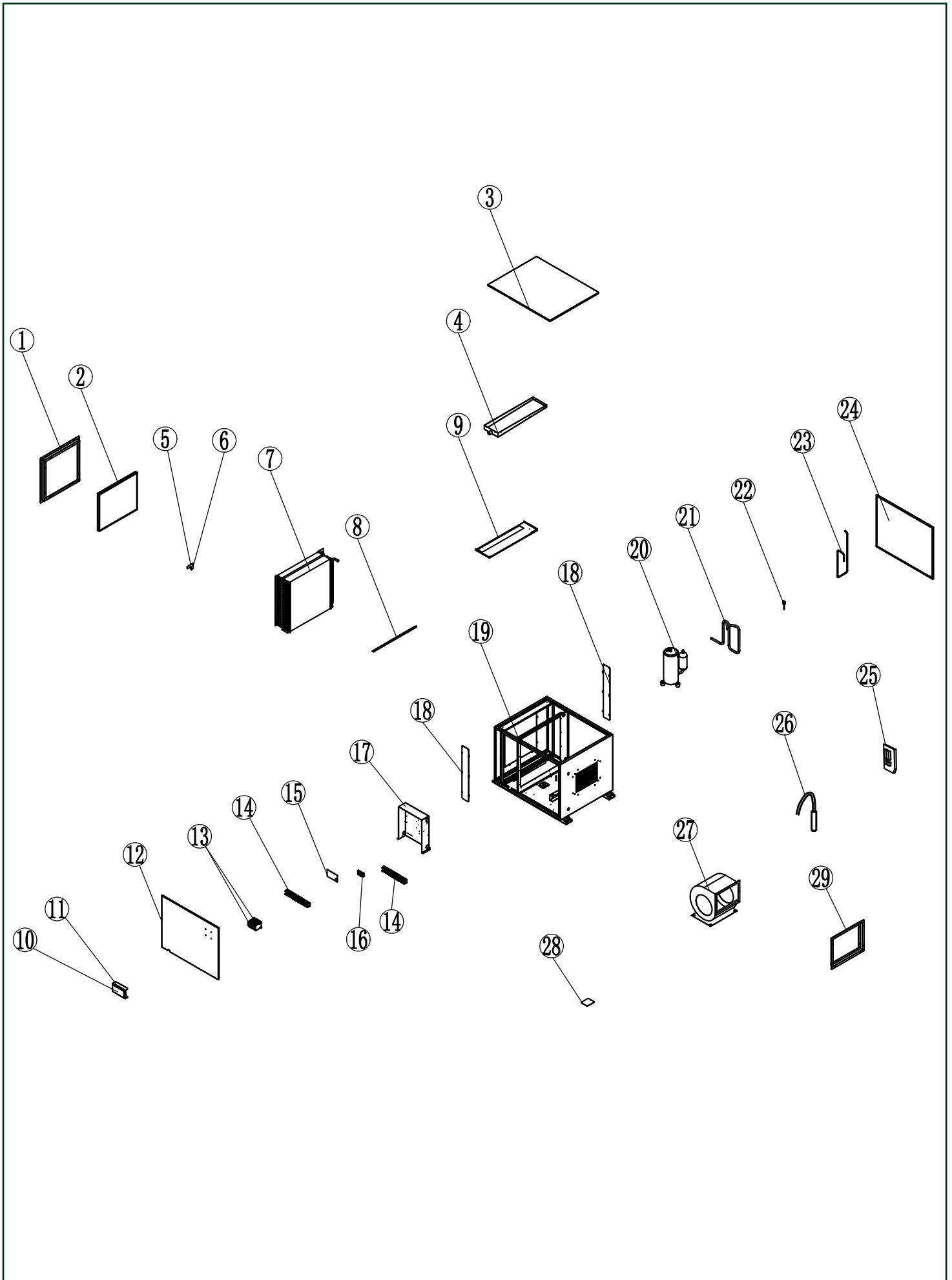


Zeta480

Exploded ---- Zeta145



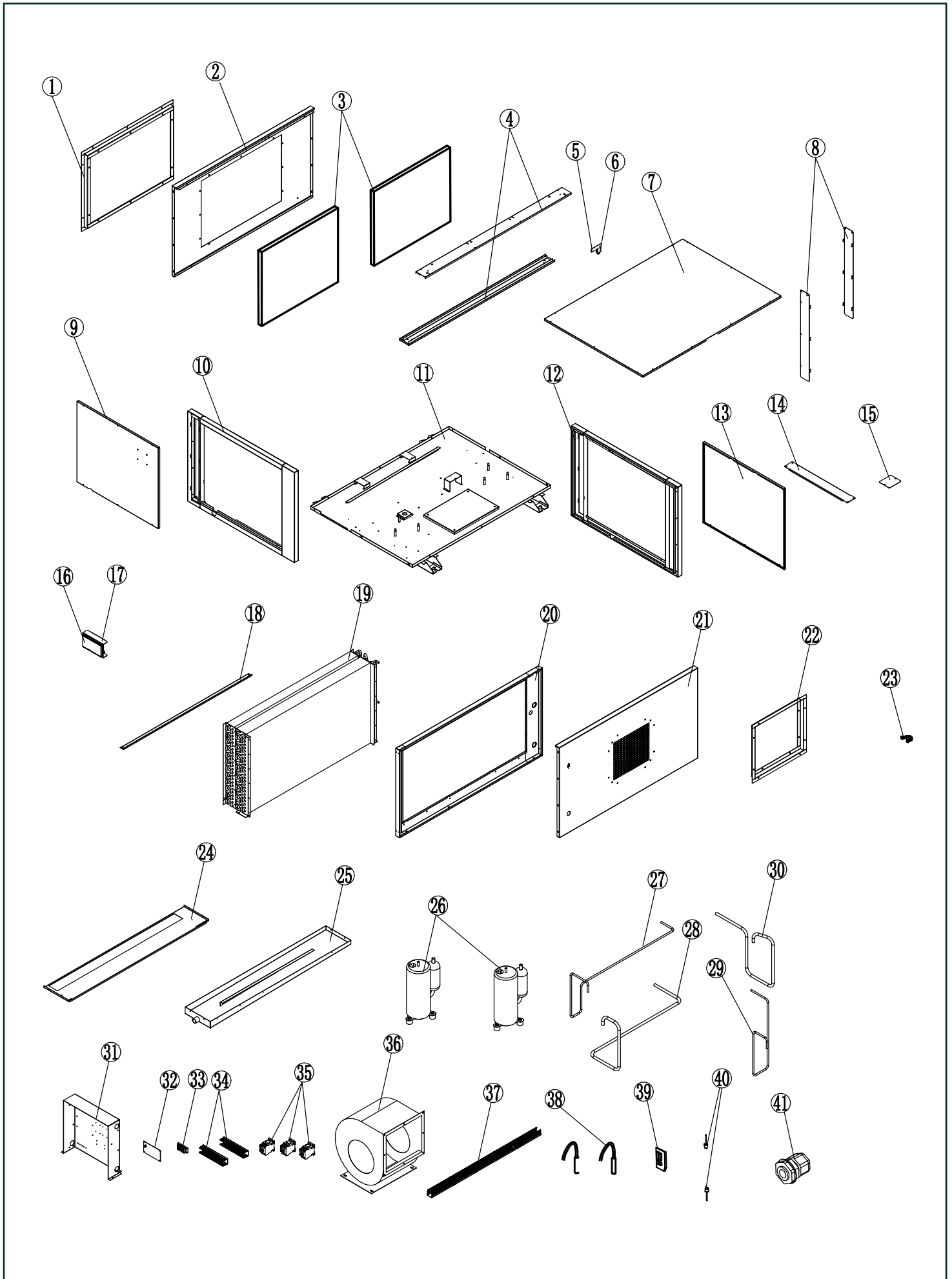
Exploded ---- Zeta240



Exploded Checklist ---- Zeta145/Zeta240

NO.	Part Description(Zeta240)	Quantity	NO.	Part Description(Zeta145)	Quantity
1	Inlet Flange Assembly	1	1	Cover	1
2	Filter	1	2	Filter Shutter	2
3	Cover	1	3	Hand Screw Nut	4
4	Drain pan	1	4	Temperature and humidity box fixing plate	1
5	Temperature and humidity box fixing plate	1	5	Temperature Humidity Sensor Box	1
6	Temperature Humidity Sensor Box	1	6	Heat Exchanger Cover	1
7	Heat exchanger Assembly	1	7	Heat Exchanger Assembly	1
8	Heat Exchanger Pad	1	8	Right Panel	1
9	Heat Exchanger Cover	1	9	Heat Exchanger Pad	1
10	Display panel electrical box	1	10	Drain Pan Assembly	1
11	Display panel box mounting plate Assembly	1	11	Compressor	2
12	Left Panel	1	12	Low Pressure Tube	1
13	AC Contactor	2	13	High Pressure Tube	1
14	Wireway	4	14	10-inch Duct	2
15	Power Board	1	15	Pump Connector Cover	1
16	Five-position terminal block	1	16	Fan Mounting Plate	1
17	Electrical Box	1	17	Fan	1
18	Filter Shutter	2	18	Housing Assembly	1
19	Housing Assembly	1	19	Filter	1
20	Compressor	2	20	Display panel electrical box	1
21	Low Pressure Tube	1	21	Display panel box mounting plate Assembly	1
22	Low Pressure Switch	1	22	Left Panel	1
23	High Pressure Tube	1	23	Electrical Box	1
24	Right Panel	1	24	Power Board	1
25	Temperature sensing head casing	1	25	Three-position terminal block	1
26	Temperature and humidity sensor	1	26	Defrost Sensor	1
27	Three Phase Fan	1	27	Capacitor Hoop	1
28	Pump Connector Cover	1	28	Temperature and humidity sensor	1
29	Out Flange Assembly	1			

Exploded ---- Zeta480



Exploded Checklist ---- Zeta480

NO.	Part Description	Quantity	NO.	Part Description	Quantity
1	Inlet Flange Assembly	1	29	High Pressure Tube 2	1
2	Front Panel	1	30	Low Pressure Tube 2	1
3	Filter	2	31	Electrical Box	1
4	Filter Holder Assembly	2	32	Power Board	1
5	Temperature And Humidity Box Fixing Plate	1	33	Five-position Terminal Block	1
6	Temperature Humidity Sensor Box	1	34	Wireway 1	2
7	Cover	1	35	AC Contactor	3
8	Filter Shutter	2	36	Three Phase Fan	1
9	Left Panel	1	37	Wireway 2	1
10	Left Bracket Assembly	1	38	Defrost Sensor	2
11	Chassis Assembly	1	39	Temperature And Humidity Sensor	1
12	Right Bracket Assembly	1	40	Low Pressure Switch	2
13	Right Panel	1	41	Cable Glands	1
14	Connecting Plate	1			
15	Pump Connector Cover	1			
16	Display Panel Electrical Box	1			
17	Display Panel Box mounting Plate Assembly	1			
18	Heat Exchanger Cover	1			
19	Heat Exchanger Assembly	1			
20	Heat Exchanger Mounting Plate Assembly	1			
21	Rear Panel Assembly	1			
22	Out Flange Assembly	1			
23	Copper Tube Hoop	1			
24	Heat Exchanger Pad	1			
25	Drain Tray Assembly	1			
26	Compressor	2			
27	High Pressure Tube 1	1			
28	Low Pressure Tube 1	1			



Thank you for selecting our dehumidifier

Note: All design and specifications herein are subject to change without notice for product improvement.